

HONORS



ITRI has been strengthening the development of emerging industries with its forward-looking technologies. It has won 66 R&D 100 Awards for 17 consecutive years since 2008. Most of the winning technologies have been licensed to manufacturers for commercialization. In 2024, ITRI was selected as a Top 100 Global Innovator for the eighth time. It is also a constant winner of CES Innovation Awards and Edison Awards.

2024

Top 100 Global Innovator

R&D 100 Awards

Ameba RAN for NTN/TN Convergence Network
MOSAIC
AADREMS
AI-LCGC
CO₂-Fixing Polycarbonate
XRCD
AiSNMSR
DiTWs-TP

Edison Awards

Novel Dual-Targeted Therapy for Glaucoma
Key Functional Cell Identity (KFCI)
High Resolution Full-Color Micro LED Display
PureTex Sustainable Decolorization Solution

2023

Top 100 Global Innovator

R&D 100 Awards

Novel Eye Drop TO-O-1002
iRFA
TO-O-1001 Ophthalmology Solution
VOC-3R System
Micro-CPS
HEAD-Matrix ALD+

2023

R&D 100 Awards

SENSE
Athena Orchestrator
Edison Awards
Athena Orchestrator—O-RAN SMO & RIC
Coordinated Supramolecular Complex
Intelligent Radio Frequency Ablation
CES Innovation Awards Honoree
AI Aquarium

2022

Top 100 Global Innovator

R&D 100 Awards

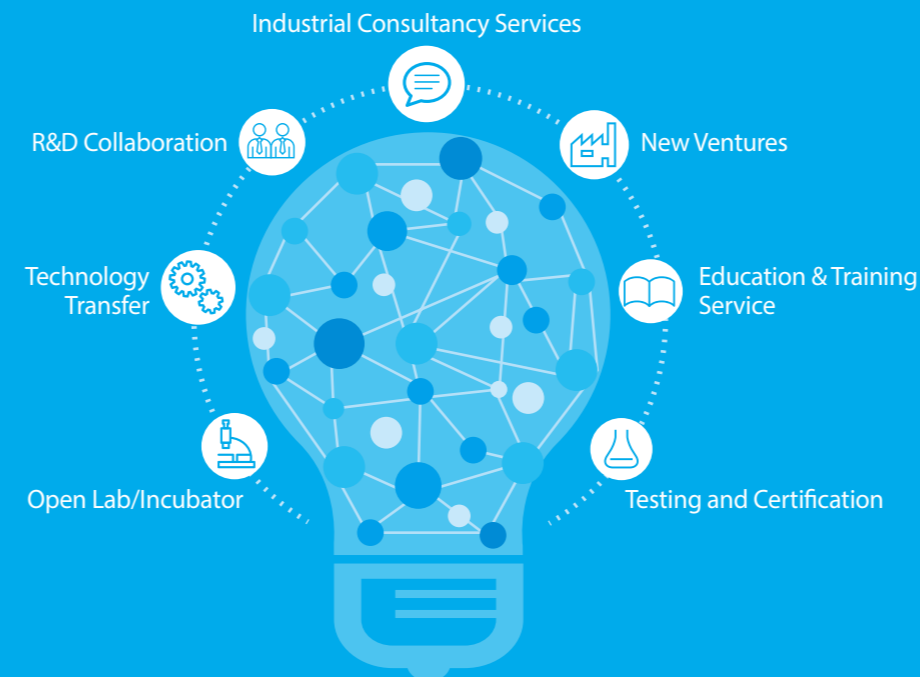
High Resolution Full-Color Micro LED Display for AR Glasses
Point-of-Care AI-DR
GreenTape™ 9KC LTCC and Ag Metallization for mmWave 5G Wireless Devices

CES Innovation Awards Honoree

iPetWeaR
RGB-D AI Robot
All-in-One Thermal Sensing System
Edison Awards
BioMS-Ti
Portable Edge AI-DR

INDUSTRIAL SERVICES

ITRI provides comprehensive industrial services. Leveraging its edge in patents and the professional assistance of the open lab and incubation center, ITRI stimulates the development of emerging technologies and service innovation, thereby increasing industrial impact and economic value.



GLOBAL LOCATIONS

TAIWAN OFFICES

ITRI Headquarters

195, Sec. 4, Chung Hsing Rd.,
Chutung, Hsinchu 310401, Taiwan
Tel: +886-3-5820100
Fax: +886-3-5820045

Kuang-Fu Campus

No. 321, Sec. 2, Guangfu Rd.,
East Dist., Hsinchu City 300044, Taiwan
Tel: +886-3-5820100
Fax: +886-3-5820045

Taipei Branch

7F, No. 106, Sec. 2, Heping E. Rd.,
Da'an Dist., Taipei City 106214, Taiwan
Tel: +886-2-27377300
Fax: +886-2-27377387

ITRI Central Region Campus

No. 2, Wenxian Rd., Nantou City,
Nantou County 540219, Taiwan
Tel: +886-49-2345200
Fax: +886-49-2345298

ITRI Southern Region Campus

No. 8, Gongyan Rd., Lijia Dist.,
Tainan City 734045, Taiwan
Tel: +886-6-6939000
Fax: +886-6-6939111

Southern Taiwan Innovation & Research Park, MOEA

No. 31, Gongye 2nd Rd., Annan Dist.,
Tainan City 709410, Taiwan
Tel: +886-6-3849000
Fax: +886-6-3847186

Green Energy Technology Demonstration Site

No. 360, Gaofa 2nd Rd., Guiren Dist.,
Tainan City 711010, Taiwan
Tel: +886-6-3636777
Fax: +886-6-3032026

INTERNATIONAL OFFICES

ITRI International Inc.

2880 Zanker Road, Suite 103,
San Jose, CA 95134, U.S.A.
Tel: +1-408-428-9988
Email: info@itri.com

ITRI Japan Office

TTD Bldg., 3F, 1-2-18 Mita,
Minato-ku, Tokyo, 108-0073, Japan
Tel: +81-3-5419-3836
Fax: +81-3-3455-5079
Email: itritokyo@itri.org.tw

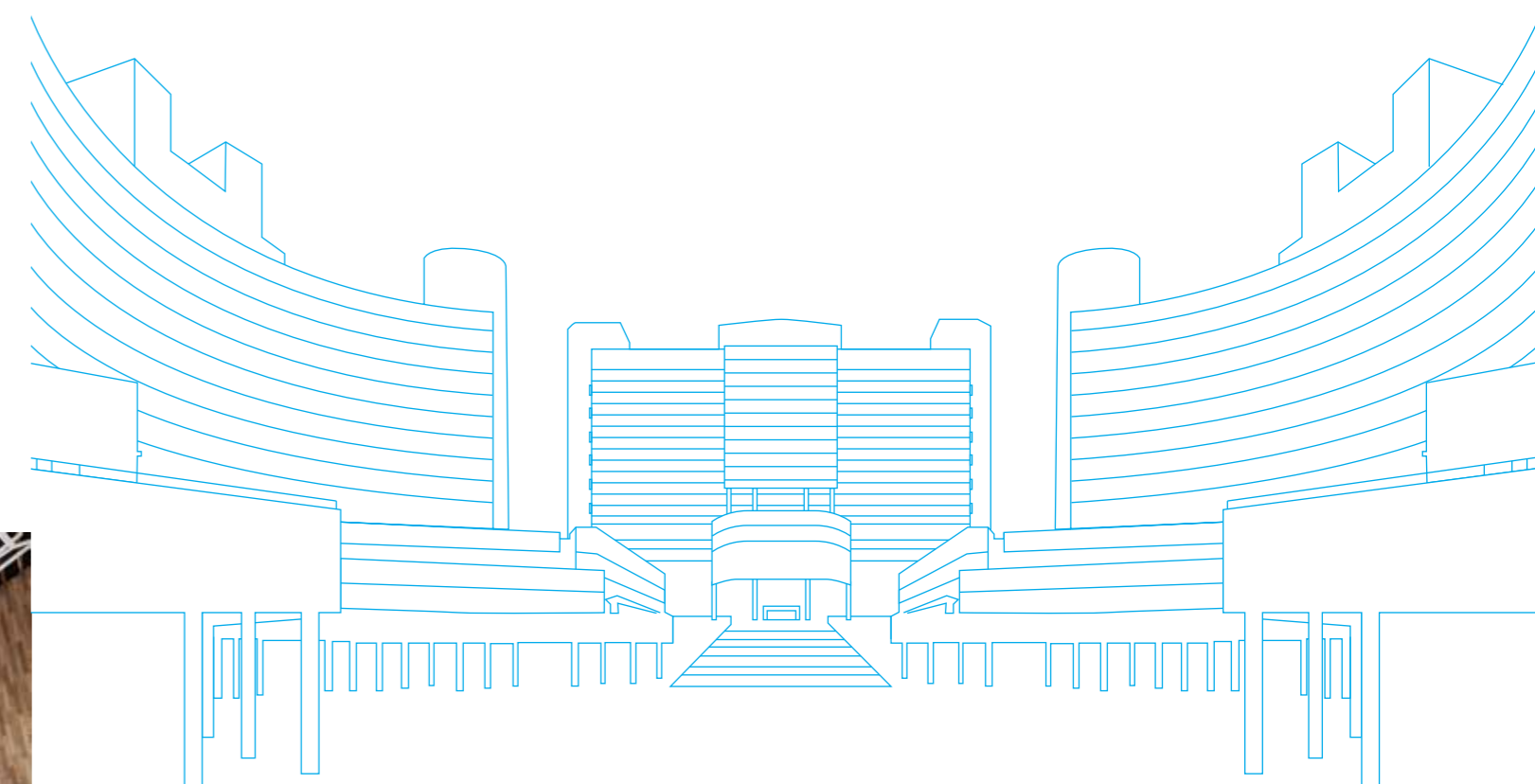
ITRI Europe Office

Hohenzollerndamm 187, 7. OG.,
10713 Berlin, Germany
Tel: +49-30-8609-360
Email: contact_germany@itri.org.tw

ITRI Southeast Asia Office

Room 2902, Level 29, 388
Exchange Tower, Sukhumvit
Road Klongtoey District,
Bangkok 10110, Thailand
Tel: +66-02-104-9105
Email: karen_Ma@itri.org.tw

INNOVATING A BETTER FUTURE!



GLOBAL PARTNERS

ITRI has been collaborating with more than 150 organizations and companies worldwide. Among these include Applied Materials, Corning, Intel, NRC, Stanford University, UC Berkeley, UCLA, University of Illinois System, Sonora Science and Technology Park, Arcelik, Heraeus, Catapult, Oxford Instruments, Teltonika, CEA, Fraunhofer, VTT, AIST, Tokuyama, NTT, Denso, Asahi Kasei, Fujifilm, Kyocera, SCG Chemicals, MIDA, and NSTDA and Mahidol University.



Official Website



Virtual Showroom

f ITRI Taiwan

▶ ITRI Channel





2035 TECHNOLOGY STRATEGY & ROADMAP

SMART LIVING

For all to enjoy high-quality living and lifestyle, ITRI is directing its R&D efforts toward innovations in *human-machine interaction & services*, *autonomous mobility systems*, and *smart consumption & logistics services*. ITRI is currently engaged in the development of XR systems, interactive in-vehicle systems, perception & prediction technologies, decision-making control, autonomous mobile robots, smart consumer services, and smart logistics. The goal is to meet the daily needs of the public and businesses while connecting Taiwan's industries with international advancements to explore new markets.

Human-Machine Interaction & Services

- Hyper-Realistic 3D Technology on Large Displays

Autonomous Mobility Systems

- AMR Smart Logistics Technology
- Comprehensive Intelligent Stacking Technology

Smart Consumption & Logistics Services

- Grab & Go Cashierless Smart Store

SUSTAINABLE ENVIRONMENT

In pursuit of a sustainable future, ITRI is dedicated to enhancing technologies in the fields of *circular economy*, *low-carbon manufacturing*, and *green energy & environment*. The Institute emphasizes the green transition of chemical & material industries, sustainable electronics technology, biotechnology manufacturing and low-carbon product design. It also focuses on energy-efficient & low-carbon manufacturing, digitalization within manufacturing processes, low-carbon agrotechnology, sustainable energy sources, energy efficiency, smart grid & energy storage, and environmental technologies.

Circular Economy

- Easy-Dismantled Solar Module
- VOC-3R System
- Integrated Pest Management Service Platform

Low-Carbon Manufacturing

- HEAD-Matrix ALD+ System
- Intelligent Cloud for Machinery
- High-Speed Laser Wobble Welding Technology Enabled with Digital Twins

Green Energy & Environment

- Power Tab
- Hydrogen Innovation Hub
- Imaging Analysis Technology for Hydrogen Leakage Detection

QUALITY HEALTH

To keep healthcare good and affordable, ITRI is actively advancing holistic and preventive technologies for precision health, medicine, and healthcare. Leveraging Taiwan's strength in ICT and medical systems, ITRI continuously refines *smart medtech* and elevates *healthcare* technology. The scope of development includes smart medical electronics, regenerative medicine, drug development, preventive healthcare, healthcare decision support systems, and general life-enhancing solutions.

Smart Medtech

- Intraoperative Brain Surgery Navigation System Based on Needle Type OCT Technology
- Immune Cell Manufacturing Platform
- Intelligent Medical Assistant Solution (iMAS)

Healthcare

- Cognitive Function Assessment and Health Empowerment Services

RESILIENT SOCIETY

To address risks brought by extreme weather, large-scale earthquakes, geopolitics, and pandemics, ITRI is strengthening society's ability to respond and recover through technology. In sectors of *infrastructure*, *resource & energy*, and *productivity*, ITRI is rolling out resilience solutions for transportation, information & communication networks, grid, energy resource management, key resources supply, workforce development, as well as manufacturing equipment and components.

Infrastructure

- Smart Energy for a Sustainable Ecosystem (SENSE)
- HolonOS, ITRI's Automatic Programming Robot

Resource & Energy

- Water Leakage Detection System for Smart City Pipeline Networks

Productivity

- Digital Optical Clearance Measurement Instrument

ABOUT ITRI

ITRI is a world-leading applied technology research institute with more than 6,000 outstanding employees. Its mission is to drive industrial development, create economic value, and enhance social well-being through technology R&D. Founded in 1973, it pioneered in IC development and started to nurture new tech ventures and deliver its R&D results to industries. ITRI has set up and incubated companies such as TSMC, UMC, Taiwan Mask Corp., Epistar Corp., Mirle Automation Corp., and Taiwan Biomaterial Co.

To remain at the forefront of innovation and address global challenges, ITRI has launched its 2035 Technology Strategy & Roadmap. This strategy aims to enhance intelligentization enabling technologies and focus on four application domains: Smart Living, Quality Health, Sustainable Environment, and Resilient Society. The Institute strives to leverage technological innovations to inspire new lifestyles, engineer market-driven solutions, create uncontested spaces, and ultimately steer society toward a better future.

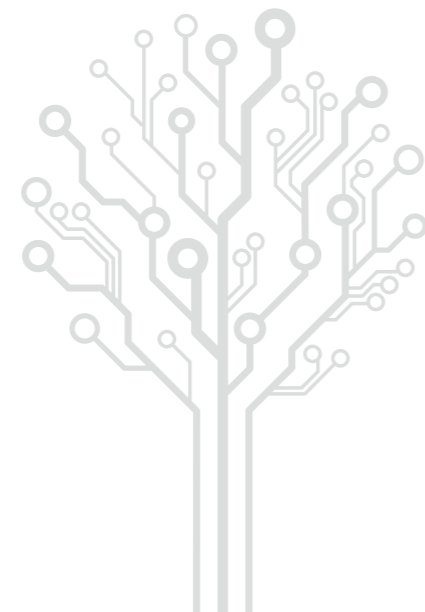


Total Staff: 6,424
Ph.D.: 1,274
Master: 4,123
Alumni: 28,206

Aug. 2024



Accumulated Patents: 32,985
Startups & New Business Units: 166
Incubatees: 210
Annual Industrial Services: 18,263
Transferred Technologies Per Year: 566



INTELLIGENTIZATION ENABLING TECHNOLOGIES

Intelligentization enabling technology is the backbone of the 2035 Technology Strategy & Roadmap. ITRI turns to *AI & cybersecurity*, *semiconductor*, *communications*, and *smart sensing* technologies to foster breakthroughs in the above four application domains. Dedicated to driving industry growth, ITRI continues to explore innovative combinations of applications and service possibilities.

AI & Cybersecurity

- Gen AI Applications

Semiconductor

- Thermal Solutions for High Performance Computing

Communications

- 5G O-RAN Micro-Cell Base Station System
- TIP-Certified 5G O-RAN Development Testing Platform

Smart Sensing

- Perovskite X-Ray Panel Detector
- Precision Feeding and Environmental Sensing Technology for Aquaculture

